




# BUSINESS PROFILE

## MBS ELECMECH GROUP

 38 Amatole Road, Unit 5 Erf 517, N4 Gateway,  
Industrial Park, Silverlakes, Pretoria, 0122

 087 550 9245

 086 602 9637

 082 852 3996

 [info@mbselecmech.co.za](mailto:info@mbselecmech.co.za)

 [www.mbselecmech.co.za](http://www.mbselecmech.co.za)



# CONTENTS

Company Details .....	1
Services Offered .....	2
Market Sector .....	6
Financials and Legality .....	7
Clients .....	8
Professional Affiliations .....	9

# OUR OFFICES

## GAUTENG

38 Amatole Road, Unit 5 Erf 517, N4  
Gateway, Industrial Park, Silverlakes,  
Pretoria, 0122

26 Panorama Road, Rooihuiskraal  
Centurion 0157

## LIMPOPO

25 Abraham Street, Legae La Batho,  
Extension 6, Polokwane, Limpopo

H/V Sentry Von Willigh Strate, Modimolle  
Munic NU, Modimolle, Limpopo

## NORTH WEST

Unit 18956, Extension 19, Jouberton,  
Klerksdorp, North West

## MPUMALANGA

1400 Dwarsloop, A – Phase Two,  
Bushbuckridge SP, Mpumalanga, 1281

# COMPANY DETAILS

**Registered Company Name:**  
MBS ELECMECH GROUP

**Registration number:**  
2004/075743/23

**TAX Registration Number:**  
9891521149

**V.A.T Registration number:**  
4340244120

**CIDB Registration Number:** 157977  
7ME (Mechanical)  
6GB PE (General Building)  
6EP PE (Electrical Infrastructure)  
5EB PE (Electrical Building)  
4SI PE (Lifts and Elevators)  
4SO PE (Waste Water, Wet Services &  
Plumbing)  
4SF PE (Fire Detection System)  
1CE (Civil)

**BEE Certification Number:**  
(Level 1 – 110% Contributor) ECSA  
Registration Number 200830126

**Physical Address:**  
38 Amatole Road, Unit 5 Erf 517, N4  
Gateway  
Industrial Park, Silverlakes, Pretoria, 0122

**Postal Address:**  
PO Box 760 Raslouw 0109

**Web Address:**  
[www.mbselecmech.co.za](http://www.mbselecmech.co.za)

# SERVICES OFFERED

## Electrical



## Mechanical



## Civil Works



## Building



## Construction





# SERVICES OFFERED



## Electrical

- LV, MV and HV Services
- Standby Power Systems
- Standby Generator Services
- Lighting
- Transformer Services and Maintenance
- Mini-Sub Installation and Maintenance
- MV Cable Jointing and Terminations
- Switch Gear Services and Maintenance
- Lightning and Surge Protection
- Access and Time Control System



## Mechanical

- Hot-Water and Steam Boilers
- HVAC- Heating Ventilation Air Conditioning
- Heat Pumps
- Laundry
- Food Preparation, Cooking, Conveying and Serving Equipment
- Hot and Cold Water Reticulation
- Lift And Elevators
- Project Engineering
- Plant Engineering
- Plant Layout
- Refrigeration and Cold Storage
- Equipment Design
- Bulk Water Reticulations



## Civil Works

- Earthworks Platform Services
- Local Roads and Streets
- Car Park And Tar Roads Construction
- Storm Water Management and Drainage Services
- Water and Sewer Reticulation Services



## Building

- Civil Structures Buildings
- Commercial Developments
- Industrial Developments
- Residential Units
- Bridges
- Water Retaining Structures
- Treatment Plants
- Project Specifications



## Construction

- Residential Developments
- Industrial Developments
- Bulk Water Supply
- Bulk Sewer Reticulation
- Sport Complexes and Facilities
- Labour Intensive Projects
- Low Cost Housing
- Roads/Bridges
- Reservoirs

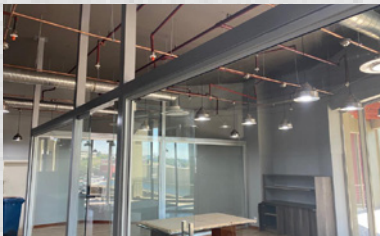
# SERVICES OFFERED



## HVAC- HEATING VENTILATION AIR CONDITIONING AND REFRIGERATION

*Installations, Services, Repairs and Maintenance*

---



## FIRE DETECTION SUPPRESSION AND RETICULATION

*Installations, Services, Repairs and Maintenance*

---



## MEDICAL GAS AND LP GAS

*Installations, Services, Repairs and Maintenance*

---



## WASTE WATER, PLUMBING, WET SERVICES, BOREHOLES WATER PIPELINE AND TANKS

*Installations, Services, Repairs and Maintenance*

# SERVICES OFFERED



## LIFTS, ELEVATORS, AND HOIST MACHINERY

*Installations, Services, Repairs and Maintenance*



## MECHANICAL SERVICES -GENERATORS, PUMPS, COMPRESSORS AND VALVE

*Installations, Services, Repairs and Maintenance*



## GENERAL BUILDING

*Installations, Services, Repairs and Maintenance*



## ELECTRICAL SERVICES

*Installations, Services, Repairs and Maintenance*



## CIVIL WORKS

*Installations, Services, Repairs and Maintenance*



# MARKET SECTOR

MARKET	SECTOR	MARKET	SECTOR
<b>HEALTH CARE</b> 	<ul style="list-style-type: none"> <li>• HOSPITALS</li> <li>• CLINICS</li> <li>• PRIVATE HOSPITALS</li> </ul>	<b>MINING</b> 	<ul style="list-style-type: none"> <li>• COOLING SHAFTS</li> <li>• MINING COOLING TRUCKS</li> <li>• UNDERGROUND HVAC</li> </ul>
<b>FOOD AND BEVERAGE</b> 	<ul style="list-style-type: none"> <li>• LIQUOR STORE</li> <li>• RESTAURANTS</li> <li>• RETAIL STORES</li> </ul>	<b>CONSTRUCTION</b> 	<ul style="list-style-type: none"> <li>• ROAD WORKS</li> <li>• CIVIL WORKS</li> <li>• BUILDING</li> </ul>
<b>BUSINESSES</b> 	<ul style="list-style-type: none"> <li>• SHOPPING CENTERS</li> <li>• OFFICE PARKS</li> <li>• CORPORATE PARKS</li> <li>• GOVERNMENT BUILDINGS</li> </ul>	<b>EDUCATIONAL SECTOR</b> 	<ul style="list-style-type: none"> <li>• UNIVERSITIES</li> <li>• FET COLLEGES</li> <li>• COLLEGES</li> <li>• HIGH SCHOOLS</li> </ul>
<b>HOSPITALITY</b> 	<ul style="list-style-type: none"> <li>• RESORTS</li> <li>• HOTELS AND GUEST HOUSES</li> </ul>		



# FINANCIALS AND LEGALITY

## BANK DETAILS

**Bank**

Standard Bank SA

**Branch**

Centurion Mall

**Branch Code**

051001

**Account number**

310430127

**Account Name**

MBS ELECMECH GROUP

---

## ACCOUNTANT

**Name**

MFB Consultants Accounting

**Contact Person**

Thabo Mashile

**Contact Number**

012 320 6675 / 083 998 2015

## INSURANCE BROKER

**Name**

Outsurance Insurance

**Policy No**

OT63576056

**Public Liability**

R 15 000 000.00

**Account Name**

MBS ELECMECH GROUP

**Contact Details**

086 010 4606

---

## FINANCIALS

Available on request.

---

## CURRENT AND COMPLETED PROJECTS

Available on request.

# CLIENTS



# PROFESSIONAL AFFILIATIONS

